



## **EVE-EMV6-CF-INT**

Lotus Emira V6  
Model Years : 2022 - 2024  
Engine Displacement : 3.5 L

### **Installation Guide**

**Installation Time : 1-2 hours**

#### **Tools Required:**

- 6mm, 7mm, 10mm, 13mm sockets and ratchet
- T25, T20 Torx Bits
- Trim Tool
- 3mm Hex Bit

**Note:** This guide has been made using a UK specification V6 Emira. The installation process is the same as the LHD Model.

All directions referring to left and right are based on looking at the engine from in front of the car.

Please take care when removing parts and fasteners. Contact your Eventuri dealer or email [info@eventuri.net](mailto:info@eventuri.net) for any further information.



## CARB E.O.

Affix CARB EO (once available) in a visible location under the hood for a smog technician to easily view. (Only applies to North America)

Item	QTY	Check
Emira Housing, MAF with MAF gasket, housing bracket, 190 gasket, 190 cowl, 661 filter, black band	1	<b>66</b>
Emira Duct with GT3RS duct gasket	1	
Emira Brace	1	
Emira Hose bracket	1	
M5x16 Flanged screws	2	
Emira breather	1	
M5 Aero nuts	2	
80x100 hose clamps	2	
M6x16 Bolts	3	
Emira EPDM Hose	1	
M6 Flanged nut	1	
661 Filter gaskets	2	



1. We will start by removing the stock airbox. Remove the trim panels covering the airbox to expose the area.



2. Pull the breather hose off the OEM flexible intake hose.



3. Loosen the hose clamps at both ends of the flexible intake tube and push the hose off the throttle body.



4. Now remove it from the airbox and take out of the engine bay.





5. Disconnect the MAF sensor plug from the sensor. There will be a locking clip on the plug to carefully pull up and then depress to remove the plug.



6. Remove the loom from the airbox. It is held on with trim clips which can be carefully prised off with a trim tool or flat head screw driver.

7. Go to the next step

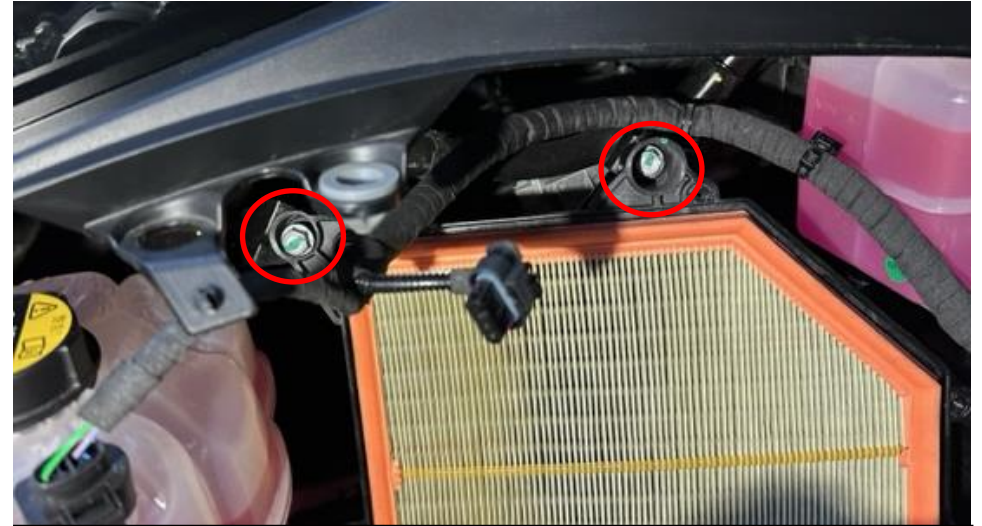


8. Unscrew the screws around the airbox to detach the base from the top. There are 2 circled in the photo but there are more to unscrew.





9. Remove the top of the airbox. It will be hooked into 2 points on the base.



10. Remove the 2 13mm bolts from the top of the airbox. The left one has a nut on the rear which needs to be also removed.



11. Push the coolant hoses off the base of the airbox – pinch them and then push out. Also remove the battery cable from the airbox.



12. The airbox can now be lifted out. It is hooked into place on this side as shown.





13. Airbox fully removed.



14. Prepare the intake for installation. Install the MAF sensor using the supplied M4 screws onto the carbon filter housing.



15. Secure the coolant hose holder to the base of the filter housing. See next photo for more details.

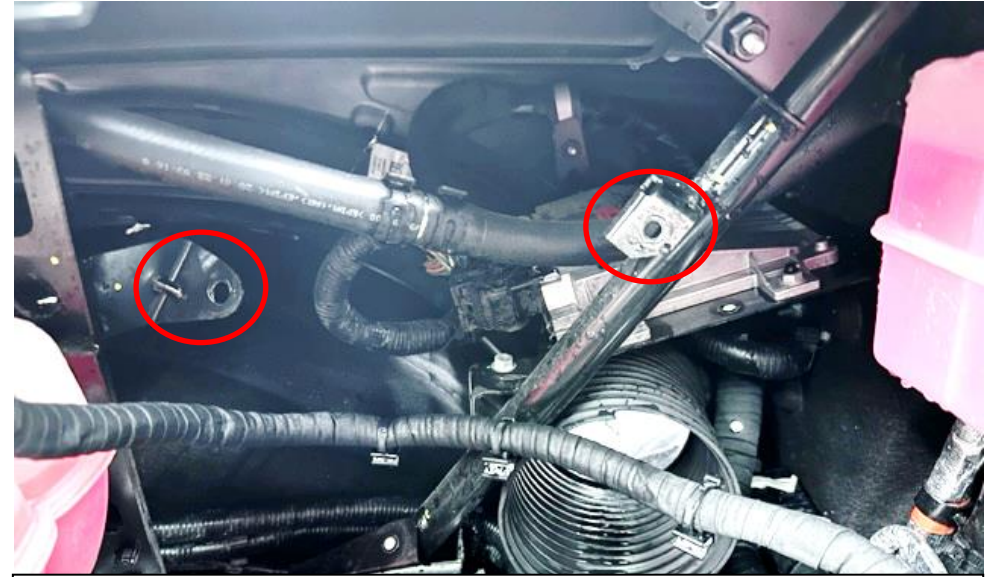


16. Use the supplied black M5 screws with M5 nuts to secure the holder to the bracket as shown.





17. Take the brace shown and install – see next step.



18. The brace will be secured to the 2 mounting positions of the OEM airbox as shown. The left position will use the supplied M6 Bolt and Nut. The right position will use the OEM bolt removed previously.



19. Supplied M6 Bolt and Nut to be used on the left side.



20. Install the brace as shown. M6 Nut and bolt used on the left side as shown. OEM bolt to be used on the right side.





21. Carefully lower the intake into the engine bay.



22. Lift the loom over the intake as you lower it into the engine bay.



23. The carbon duct needs to be positioned inside the OEM cold air feed.



24. Push the carbon duct into the cold air feed.





25. Rotate the filter housing to line up the bracket on the housing with the brace previously installed.



26. Be careful of the coolant hoses at the base – we will push these into the holder after the intake is fully lined up.



27. Push the breather adapter into the new Flexible Hose. Put the supplied hose clamps on both sides of the hose loosely.



28. Push the flexible side onto the filter housing.





29. Move the hose clamp away from the opening and rotate the hose towards the throttle body. There will be enough flexibility to allow you to push it into place.



30. Make sure the hose is correctly located onto the throttle body all the way around and push it in as far as possible. Do not secure the clamp yet.

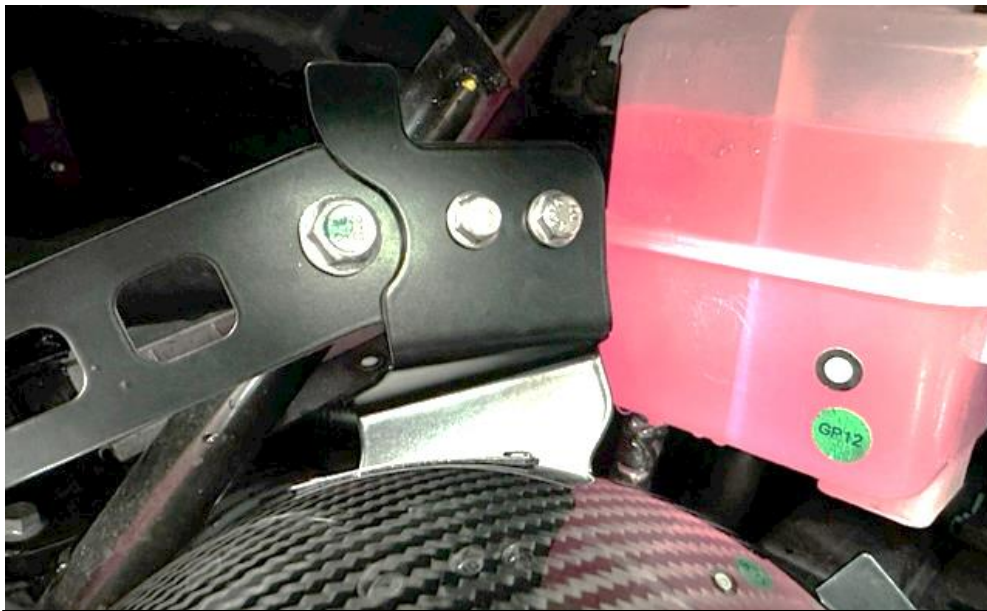


31. Line up the housing bracket with the brace again and insert the coolant hoses into the holder – see next step.

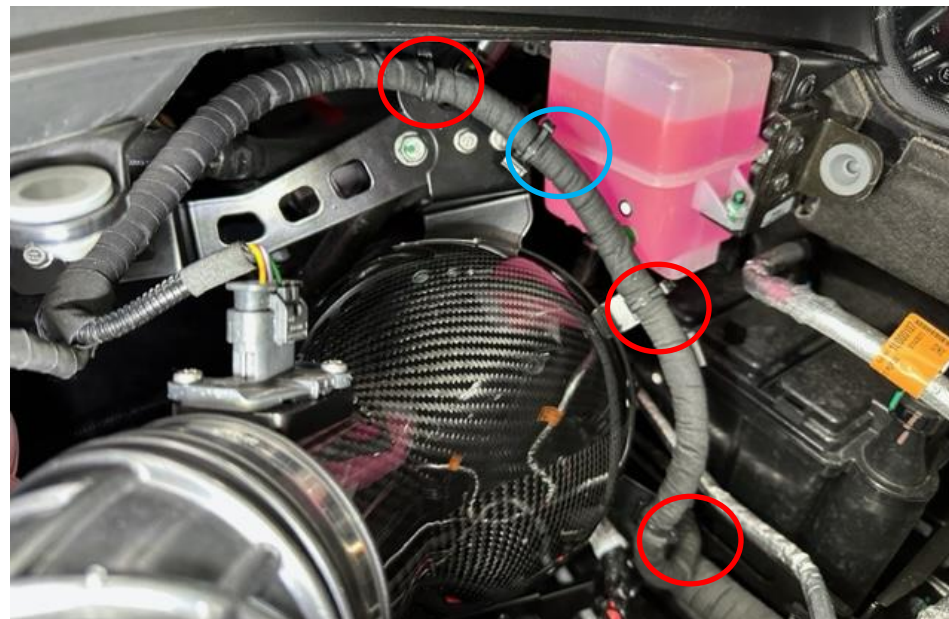


32. Push the coolant hoses into the holder at the base of the intake. Also locate the battery cable into the hook.





33. Now secure the filter housing by using 2 of the supplied M6 Bolts and securing the brackets together. The rear brace already has captive nuts to screw into.



34. Push the loom clips over the tabs on the filter housing bracket (red circles). One clip will stay loose (blue circled).



35. Insert the breather hose onto the breather adapter and secure the intake hose to the throttle body. Make sure it is all the way on.



36. Insert the MAF sensor plug and lock the clip into position. Secure the hose onto the filter housing by tightening the hose clamp. Make sure it is still fully pushed onto the housing. Do not overtighten onto the carbon – it just needs to be hand tight. You can now reinstall the trims on top of the engine bay previously removed.



**You have now completed the installation of the Eventuri Lotus Emira V6 System.**

Eventuri cannot take responsibility for an incorrectly installed intake or any damage caused during installation.