



### **EVE-B48A20-CF-INT**

BMW F70 M135, F74 M235, U10 X2 M35, U11 X1 M35  
Model Years : 2025+  
Engine Displacement : 2.0 L

### **Installation Guide**

**Installation Time : 1-2 hours**

#### **Tools Required:**

- 6mm, 7mm, 10mm sockets and ratchet
- T20, T25 Torx Bit
- Trim Tool
- 3mm Hex Bit

**Note:** This guide has been made using a UK specification M135. The installation process is the same as the LHD Model.

All directions referring to left and right are based on looking at the engine from in front of the car.

Please take care when removing parts and fasteners. Contact your Eventuri dealer or email [info@eventuri.net](mailto:info@eventuri.net) for any further information.



## CARB E.O.

Affix CARB EO (once available) in a visible location under the hood for a smog technician to easily view. (Only applies to North America)

**EVE-B48A20-CF-INT**

Completed by:

CF

BOX: TS

Item	QTY	Check
F70 Housing, F40V3 MAF with maf gasket, M4X12 Maf screws, 151 Cowl, 151 Cowl gasket, Filter (EVE-151-G2-FTR), 166 V-Clamp, Gasket, F70 Housing Bracket with BMW style Boss	1	<b>77</b>
F70 Duct, DX100 Rubber Edging, R & L duct bracket, R & L bracket gaskets	1	
F70 Flexible Hose	1	
F70 Rubber washers	2	
M5x12 Flanged screws	2	
M6X16 Bolt (Black)	2	
90x110 Hose clamp	1	
80x100 Hose clamp	1	



1. Remove the engine cover also remove the strut brace if you have one. Disconnect the MAF plug from the sensor on the airbox.



2. Unscrew the 2 duct mounts.



3. The duct section can be unclipped from



4. Now remove it from the airbox and take out of the engine bay.





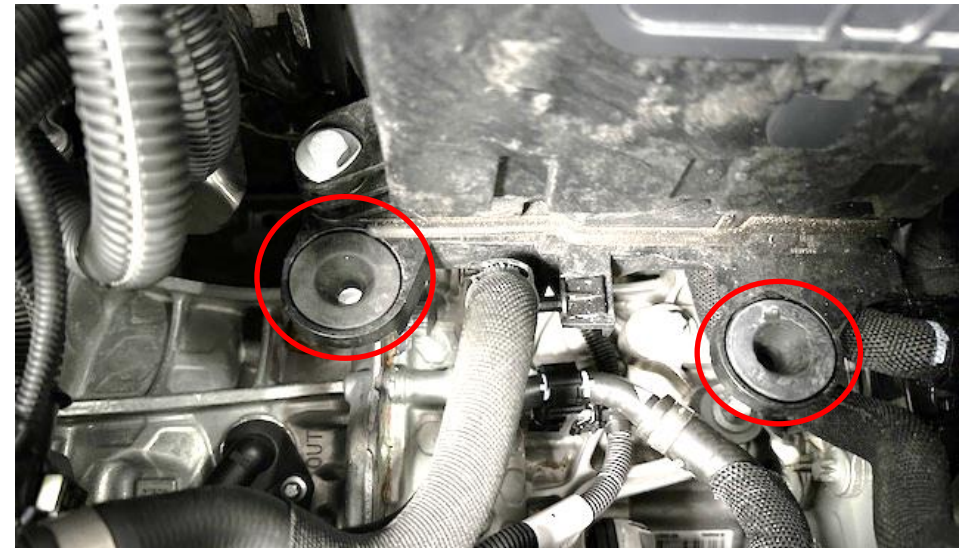
5. Loosen the hose clamp around the flexible hose connected to the airbox. Pull the flexible hose off the airbox.



6. On the left side of the airbox there is a rubber mount which holds a loom to the airbox. Slide this off the airbox.



7. The airbox can now be removed by pulling it out. It is held in place by 2 rubber mounts on the base.



8. Make sure these 2 rubber mounts remain in the engine bay – in front of the battery compartment. If they are not there, they will be on the airbox, if so, remove and reinstall into position.





9. Loosen the hose clamp around the back of the flexible hose and remove the hose entirely.



10. Remove the MAF sensor from the stock airbox and install into the Eventuri housing.  
**WARNING – you MUST use the supplied torx M4 screws, not the OEM screws.**



11. Take the supplied flexible hose. Note the orientation with the text F70 TOP.



12. Install the hose onto the rear inlet tube using the supplied hose clamps. The F70 TOP side should be facing towards the front of the car. The Eventuri intake will go into that side. Secure the hose clamp on the rear tube.

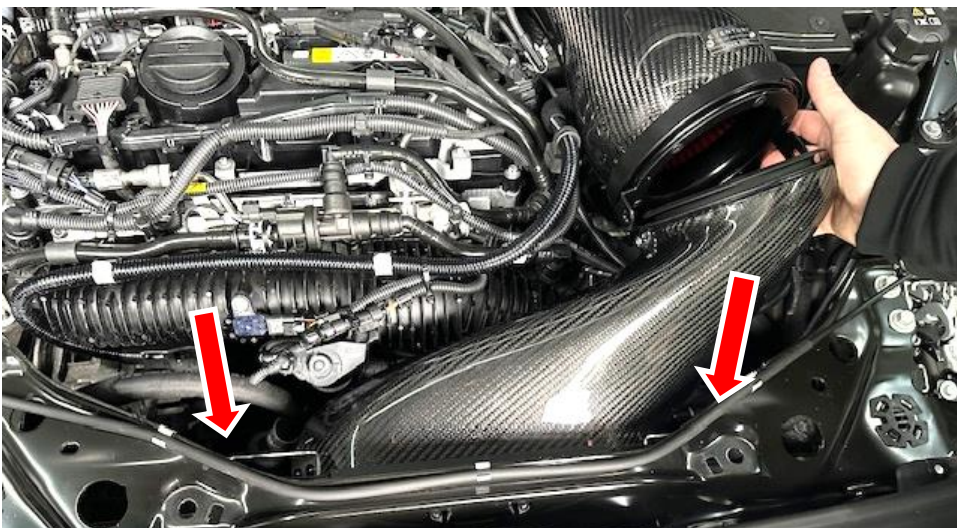




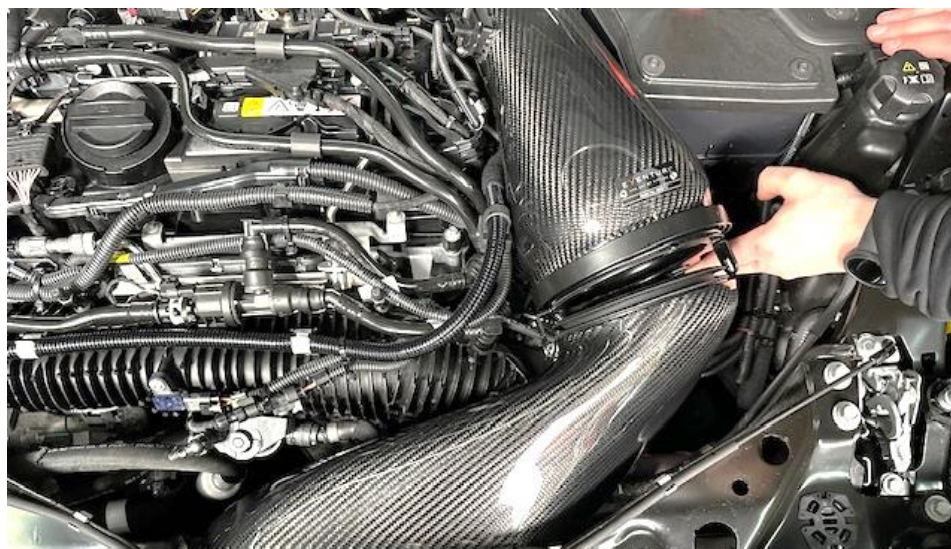
13. Push the Eventuri intake into the flexible hose. Do not fully mount the intake yet. Leave it loose.



14. Take the duct and start to install the rear of the duct into the OEM air feed at the front of the car. The brackets will go underneath the slam panel. See next step.

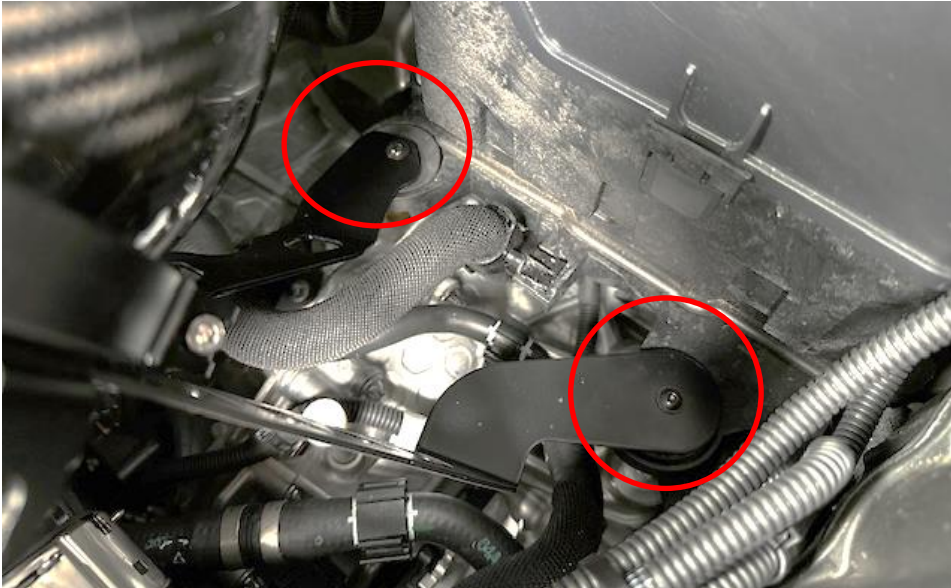


15. Lift the filter housing and locate the face of the housing onto the duct. Lower the housing with the duct together. Ensure the brackets on the duct are underneath the slam panel as shown by the arrows.



16. Carefully lower then together so that they squarely close the gap.

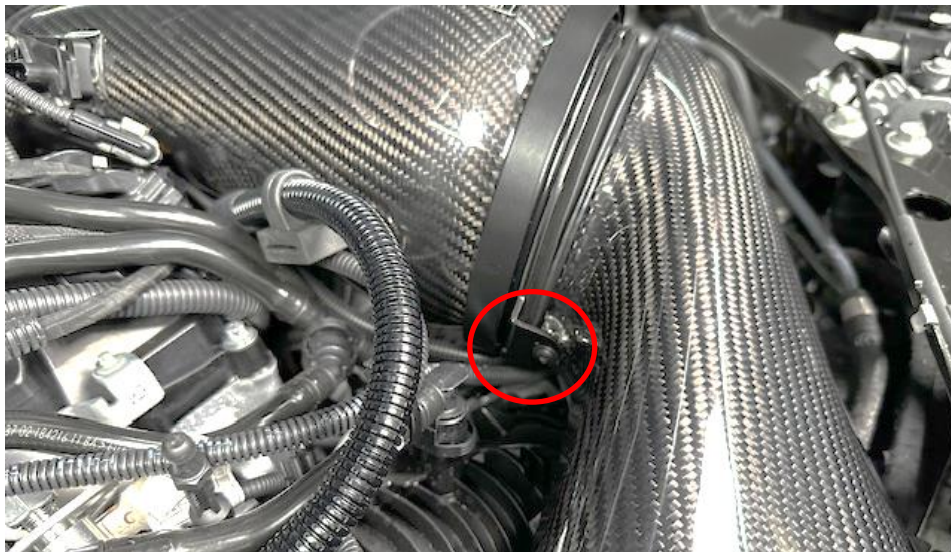




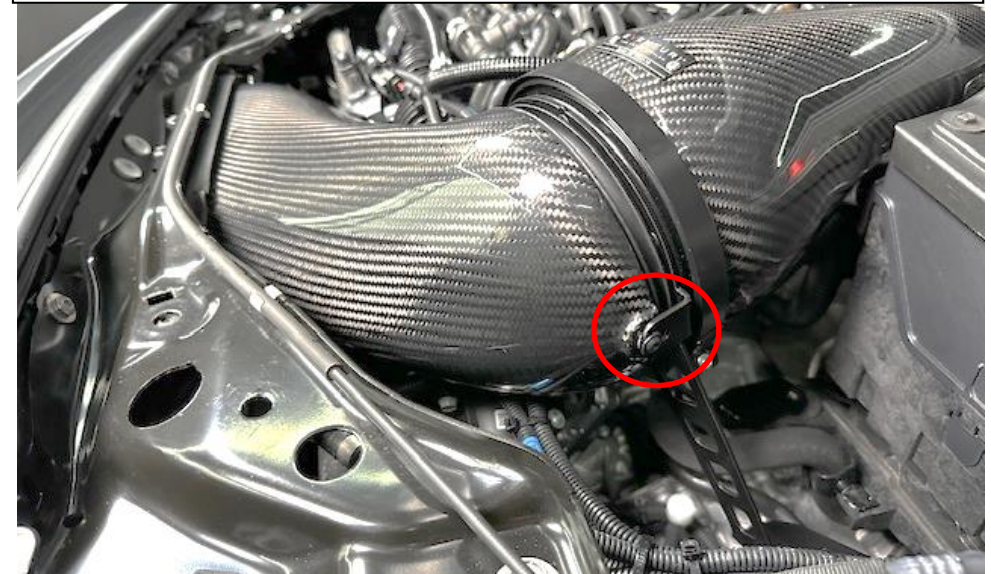
17. Push the mounts on the housing bracket into the OEM rubber mounts.



18. Take the 2 supplied flanged hex screws and secure the duct to the housing. See next 2 photos.



19. Secure this bracket to the duct using one of the screws.



20. Other side to secure.





21. Take the supplied M6 bolts and Rubber washers.



22. Secure the duct using the bolts. The washer will protect the metal. The bolts secure into the duct brackets.

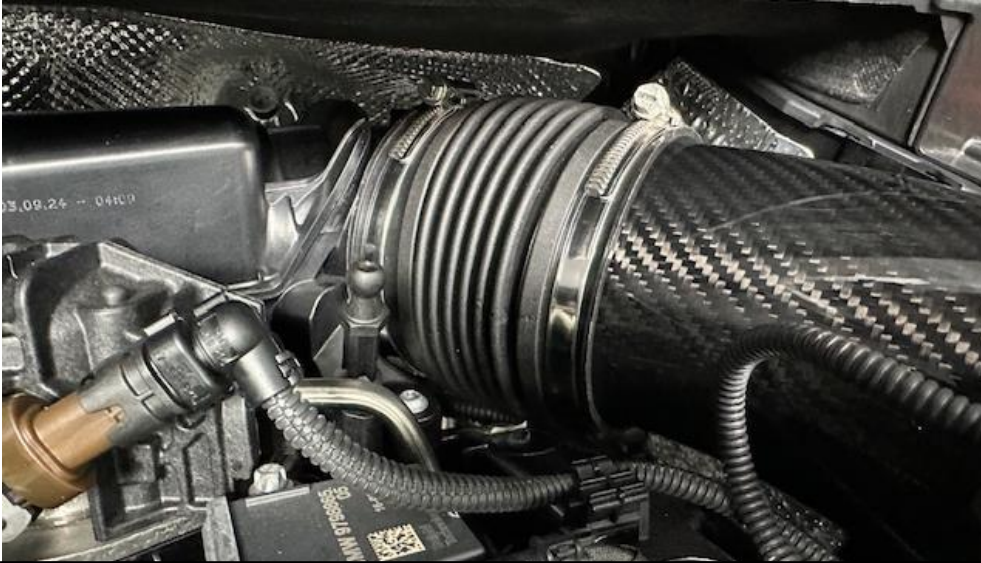


23. Secure both sides.



24. Connect the MAF plug into the sensor and lock it with the tab.





25. Secure the hose clamp around the carbon housing. DO NOT overtighten, this just needs to be hand tight.



26. Reinstall the engine cover and the strut brace.



**You have now completed the installation of the Eventuri Lotus Emira V6 System.**

Eventuri cannot take responsibility for an incorrectly installed intake or any damage caused during installation.