



[Spherical Rear Sway Bar End Links, C5 Audi A6/S6/RS6 & Allroad, B5/B5.5 Volkswagen Passat 4-Motion](#)



Supplied Parts:

- 034Motorsport Spherical Rear Sway Bar End Links (2)
- 034Motorsport Billet Aluminum End Link Spacers (4)
- Grade 10.9 M10x50 Bolts (2)
- Grade 10.9 M10x55 Bolts (2)
- M10 Washers (4)
- M10 Nylock Nuts (2)

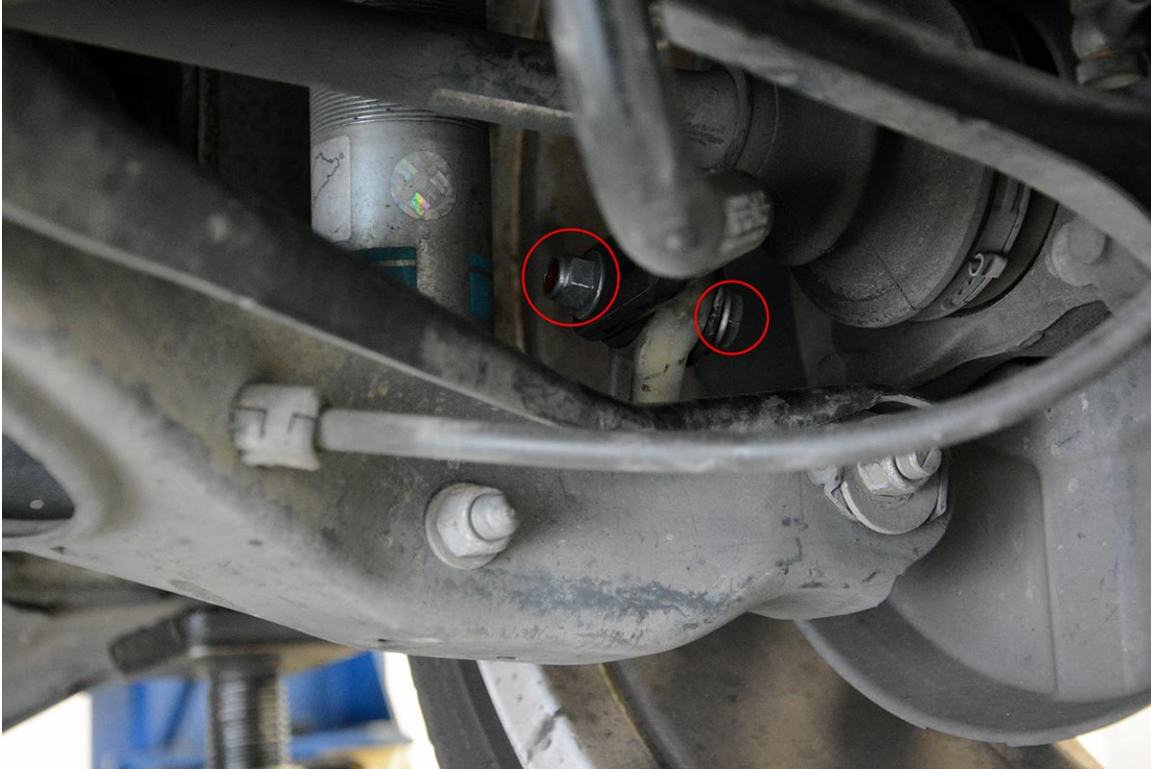
Tools Needed:

- Hands (2) *(Preferably small, nimble hands. Opposable thumbs are required!)*
- Patience
- 15mm Wrenches
- 16mm Wrenches
- 17mm Wrenches
- Torque Wrench

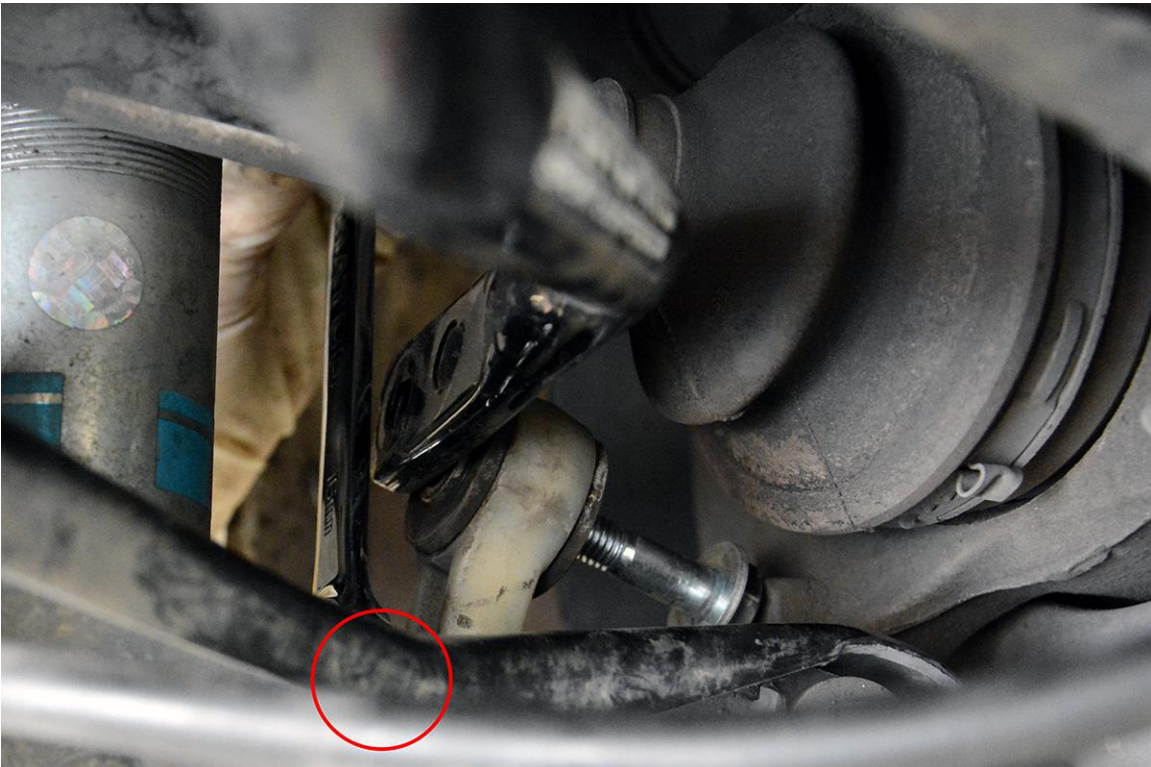
034Motorsport C5 Audi A6/S6/RS6/allroad & B5/B5.5 Spherical Rear Sway Bar End Links replace the factory rubber bushings and plastic bodies to increase the effectiveness of the rear sway bar, and improve handling feel and performance.

Installation of this upgrade is a straightforward process that will take approximately one hour to complete.

Step 1 – Raise the vehicle securely on jackstands or a lift, in order to gain access to the rear suspension. Remove the factory bolt and nut securing the top of the factory end link to the rear sway bar, as circled below.



Step 2 – Using a 15mm wrench, remove the bolt securing the bottom of the end link to the lower control arm. This is a tight space, but the bolt can be removed without touching the rest of the suspension. Remove the factory end link.



Step 3 – This step will require some patience, and small hands help as well. If you have a patient friend with small hands, give him a call and invite him over to help. With a spacer installed on each side, secure the bottom of the Spherical Sway Bar End Link to the lower control arm with the supplied M10x50 Bolt and M10 Washer. Torque to 55 Nm.



Step 4 – Install spacers into the top of the Spherical Sway Bar End Link. Secure to the sway bar using the supplied M10x55 Bolt, M10 Washer, and M10 Lock Nut. Torque to 55 Nm.



Step 5 – Repeat installation on the other side, verify that all hardware is properly torque, lower the vehicle, and enjoy the upgrade!

