

[Billet Upper Dogbone Insert, 8V/8S Audi A3/S3/TT/TTS & MkVII Volkswagen Golf/GTI/R](#)



**034 MOTORSPORT**

034Motorsport's Billet Upper Dogbone Mount Insert for 8V/8S Audi A3/S3/RS3/TT/TTS/TTRS & MkVII Volkswagen Golf/GTI/R is the new standard in performance and durability. This dogbone insert was engineered with performance in mind, manufactured from billet aluminum to maintain proper articulation and provide longevity.

### Installation Spiciness Rating



(Mild)

Installation of your 034Motorsport Billet Upper Dogbone Mount Insert is a straightforward process that will take approximately 1 hour to complete.

### Required Parts

- **034Motorsport Billet Aluminum MQB Dogbone Mount Lower Insert (Part number 034-MQB-DBMI or equivalent) is required for this installation.**

### Supplied Parts:

- 034Motorsport Billet Upper Dogbone Mount Insert

### Tools Needed:

- Ratchet, Torque Wrench, Screwdriver
- Sockets – 16mm, 21mm
- Thumbs

About This Guide

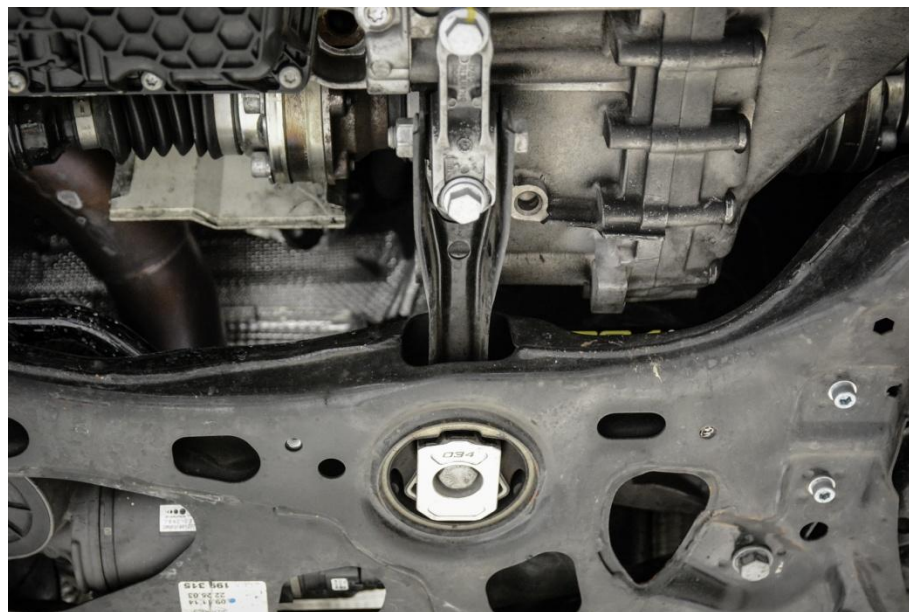
This Install Guide documents the installation process on a 2016 Audi S3, and for the upper insert portion, a 2018 TTRS. The actual installation process for your vehicle may vary by model, due to factory options, or because of existing aftermarket modifications you have installed.

### Getting Started

- Ensure you have all parts and tools required for installation by reading the complete Install Guide.
- Raise your vehicle securely using a lift or safely raise your vehicle with a jack and support with jack-stands.

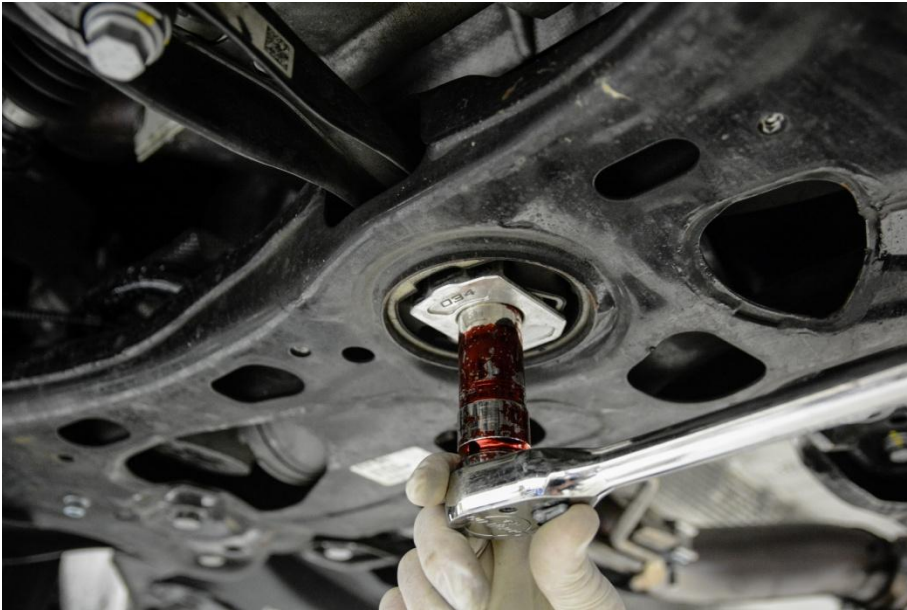
### Step 1

Locate the factory dogbone mount securing the engine/transmission to the front subframe.



### Step 2

Using a 21mm socket, remove the bolt securing the factory dogbone mount to the front subframe.



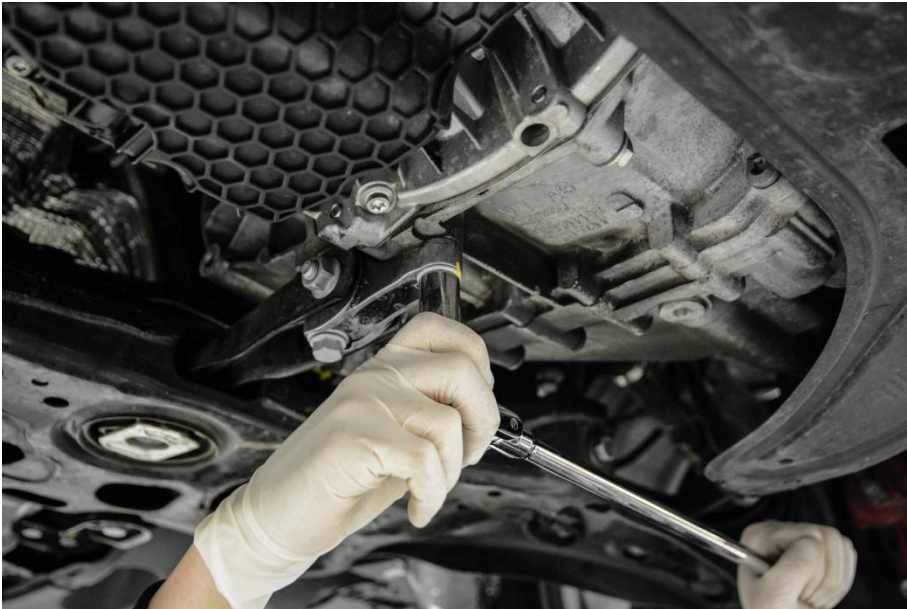
### Step 3 (Optional)

Using a flathead screwdriver, remove the dogbone mount insert if one has been installed previously. The lower dogbone mount insert is required with this product.



### Step 4

Using a 16mm socket, remove the two bolts securing the factory dogbone mount to the transmission.



### Step 5

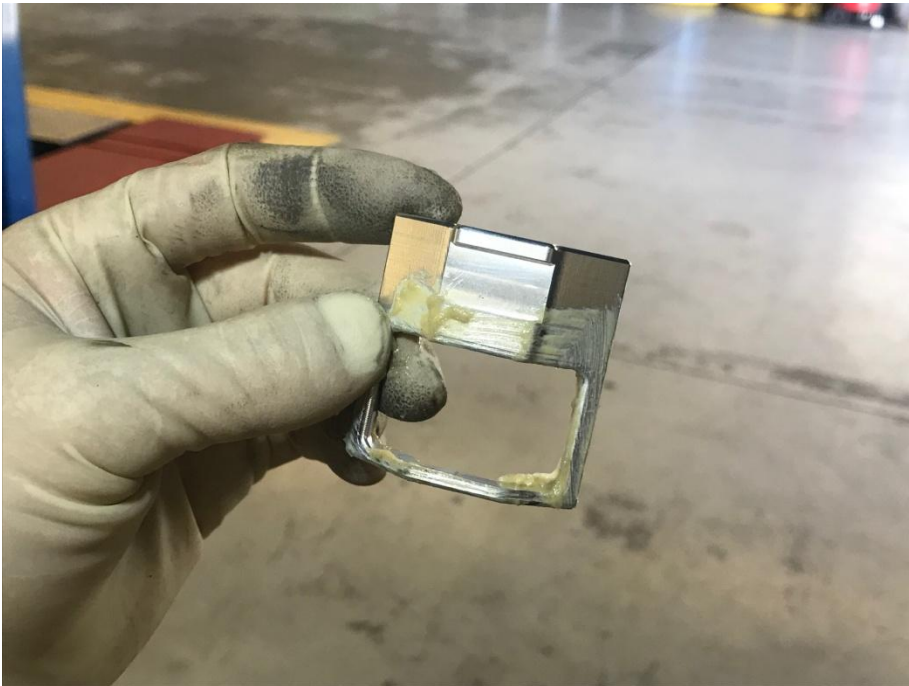
Remove the factory dogbone mount from the vehicle by sliding forward and out of the front subframe.





### Step 6

Apply a light coating of grease on the 034-509-1035 MQB Upper Dogbone Mount Insert.



### Step 7

Orientate the insert this way.



### Step 8

Press insert straight up into mount, in the front void space.



### Step 9

Press insert fully into mount.



### Step 10

Using your thumb, press insert up into upper portion of the mount.



### Step 11

Correctly seated upper insert should look like this.





**Note:** steps 12-17 show the 034Motorsport Billet + Spherical Dogbone Mount being installed. If you are reinstalling the stock dogbone, it will be the same steps.

### Step 12

Apply a coat of grease to the tail end of the 034Motorsport Billet + Spherical Dogbone Mount to ease installation into the rubber bushing.



### Step 13

Insert the tail end of the 034Motorsport Billet + Spherical Dogbone Mount into the front subframe and align front holes with those on the transmission.





### Step 14

Loosely install the front two bolts securing the 034Motorsport Billet + Spherical Dogbone Mount to the transmission using the new supplied factory bolts.



### Step 15

Install Lower Dogbone Mount Insert. Use a spare hand to move engine/transmission and align bolt hole in the front subframe with the 034Motorsport Billet + Spherical Dogbone Mount. Loosely install the new factory bolt supplied in the kit.



### Step 16

Using a 16mm socket, torque the 2 new factory bolts securing the 034Motorsport Billet + Spherical Dogbone Mount to the engine/transmission to 50 Nm + 90 degrees.



### Step 17

Using a 21mm socket, torque the new factory bolt securing the 034Motorsport Billet + Spherical Dogbone Mount to the front subframe to 130 Nm + 90 Degrees.



### Step 18

Ensure all bolts are secure, and lower your.

### Step 19

Enjoy the Upgrade!